

THE BIRCHWOOD

3 Bedroom Home



Artist's Impression

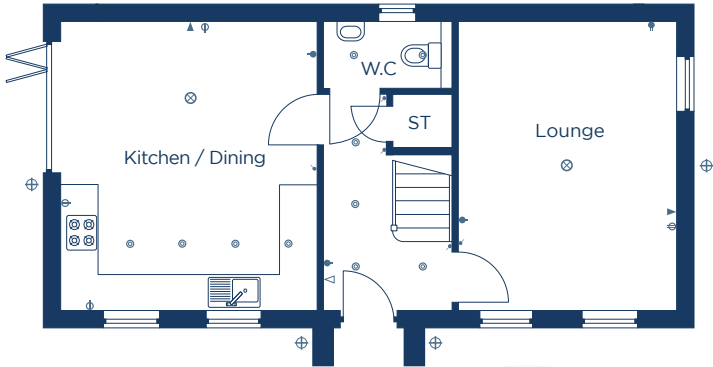
An elegant three bedroom detached home.

Plots: 81, 82, 98, 103, 116, 119

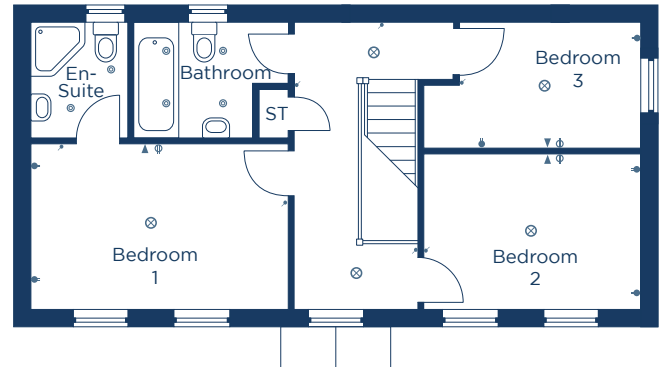
THE BIRCHWOOD

3 Bedroom Home

Ground Floor



First Floor



Kitchen / Dining
4250 x 4800 13'11" x 15'9"

Lounge
3600 x 4800 11'10" x 15'9"

W.C
2150 x 1100 7'1" x 3'7"

Bedroom 1
4300 x 2800 14'1" x 9'2"

En-Suite
1650 x 1900 5'5" x 6'3"

Bedroom 2
3600 x 2600 11'10" x 8'6"

Bedroom 3
3600 x 2100 11'10" x 6'11"

Bathroom
2550 x 1900 8'4" x 6'3"

● Low level socket

⊖ High level socket

⊗ Pendant light

⊕ External light

— Fluorescent light

⊙ Spotlight

⦿ Light switch

▶ TV point

▷ BT point

CONSUMER CODE FOR HOME BUILDERS

www.consumercode.co.uk

danumhomes.co.uk

All information contained in this leaflet is taken from design intent material and may be subject to further design development. Images are for illustration only and do not form part of any contract of sale. The dimensions and layouts given are estimated and for guidance only and are subject to chosen plot. T2 6663 Revision Date: 13.03.26 Revision: 02

The Wolds